

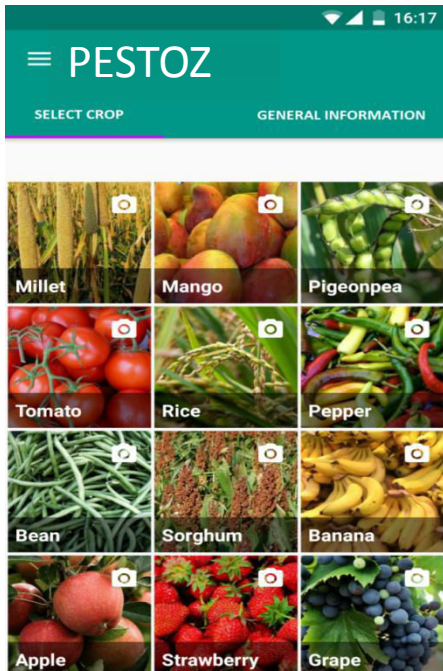
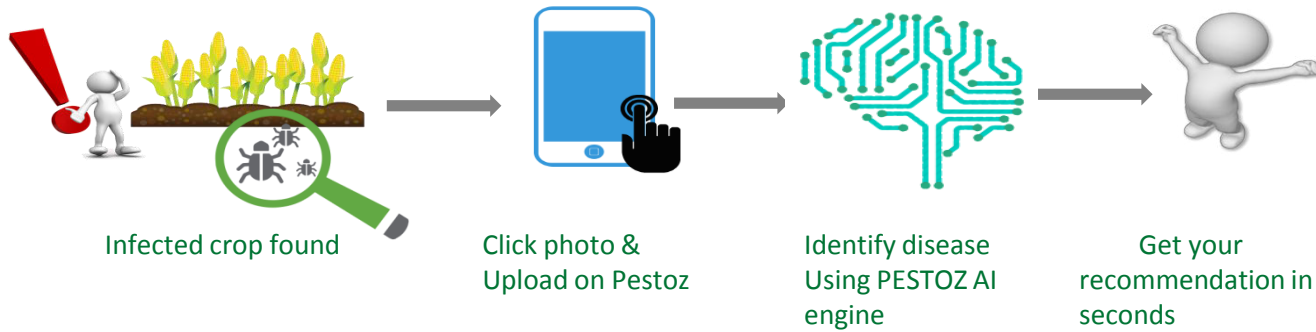


Empowering agriculture with Artificial Intelligence!

#startupindia



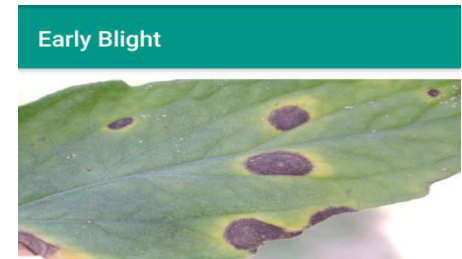
PESTOZ – Crop Disease Diagnosis



Select Crop



Click Photo



Cultural Control

- Use resistant or tolerant cultivars.
- Change the nursery beds location every season, eradicate weeds and volunteer tomato plants, fertilize properly
- Avoid planting overlapping crops in adjacent area

Chemical Control

- Spray azoxystrobin 23%% SC @ 200 ml in 200 l of water/acre or
- captan 50%% WP @ 1000 g in 300-400 l of water/acre or
- captan 75%% WP @ 666.8 g in 400 l of water/acre or
- copper oxy chloride 50%% WP @ 1000 g in 300-400 l of water/acre or

Check solution

Salient Features

- ❖ **Computer vision technology** – Using computer vision, it scans the input diseases image of crop and predict the disease.
- ❖ **Single input parameter** - It doesn't require any other input parameter like temperature, soil conditions etc to detect the disease other than the image
- ❖ **Robust** – It can detect diseases in different external environment conditions.
- ❖ **Disease disambiguation** - It reduces the human bias in detecting similar looking diseases by detecting them precisely.
- ❖ **Automated process** - It is completely automated process without any human intervention.
- ❖ **Location invariant** - It can easily detect diseases across all over the world, independent of the location.
- ❖ **Scalable technology** - It is easily scalable to millions of end users without losing on accuracy.

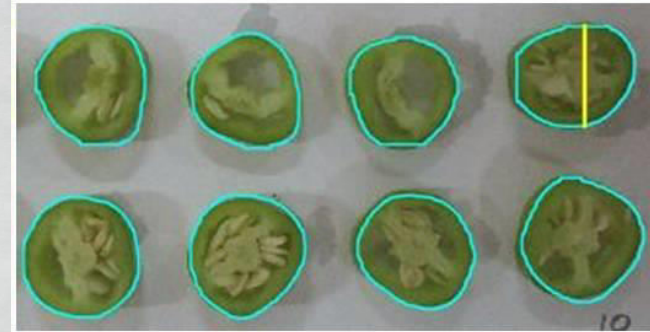
PHENOX – Digital Phenotyping



Chilli Length



Seed Count



**Chili Diameter
= 0.82cm**

Multiple fruits in one go!

Diameter, Girth, Pericarp

Phenotypic Traits:

- Chilli Seed Count
- Chilli Length
- Pericarp thickness, Width, Girth
- Color Intensity

PHENOX – Disease Severity Score



Anthracose Severity Scoring

- Just click an image of chilli and get the severity score within seconds.
- No manual measurements required.

*** Can be done for other crops & diseases.**

Disease Severity Scoring



Processed Image (Output)



Original Image (Input)

Showing disease severity of 17.94% on Rice Blast .

Yellow shades are diseased area.

There is a bounding box in aqua color marking the boundary of the leaf in focus.

Easy Data Capturing & Storage

✕

Please enter

Plot:


Variety:

Location:

OKAY

Easy to Capture Data


← My Images



Plot :

Variety :

Length :



Plot :

Variety :

Mean Dia :

Mean Width :

Export to Excel

Easy Data Retrieval

- Every phenotypic trait is linked to a seed variety, plot number, location & any other unique parameter.
- Captured data can be easily exported in an Excel format with an option to email.

Plot identification & Plant counting



Plot Identification and Plant Counting from UAV image

Product for plot identification and plant counting in plots using UAV (Unmanned Aerial Vehicles Imagery).

THANK YOU

